



**C2 R2 MAX**

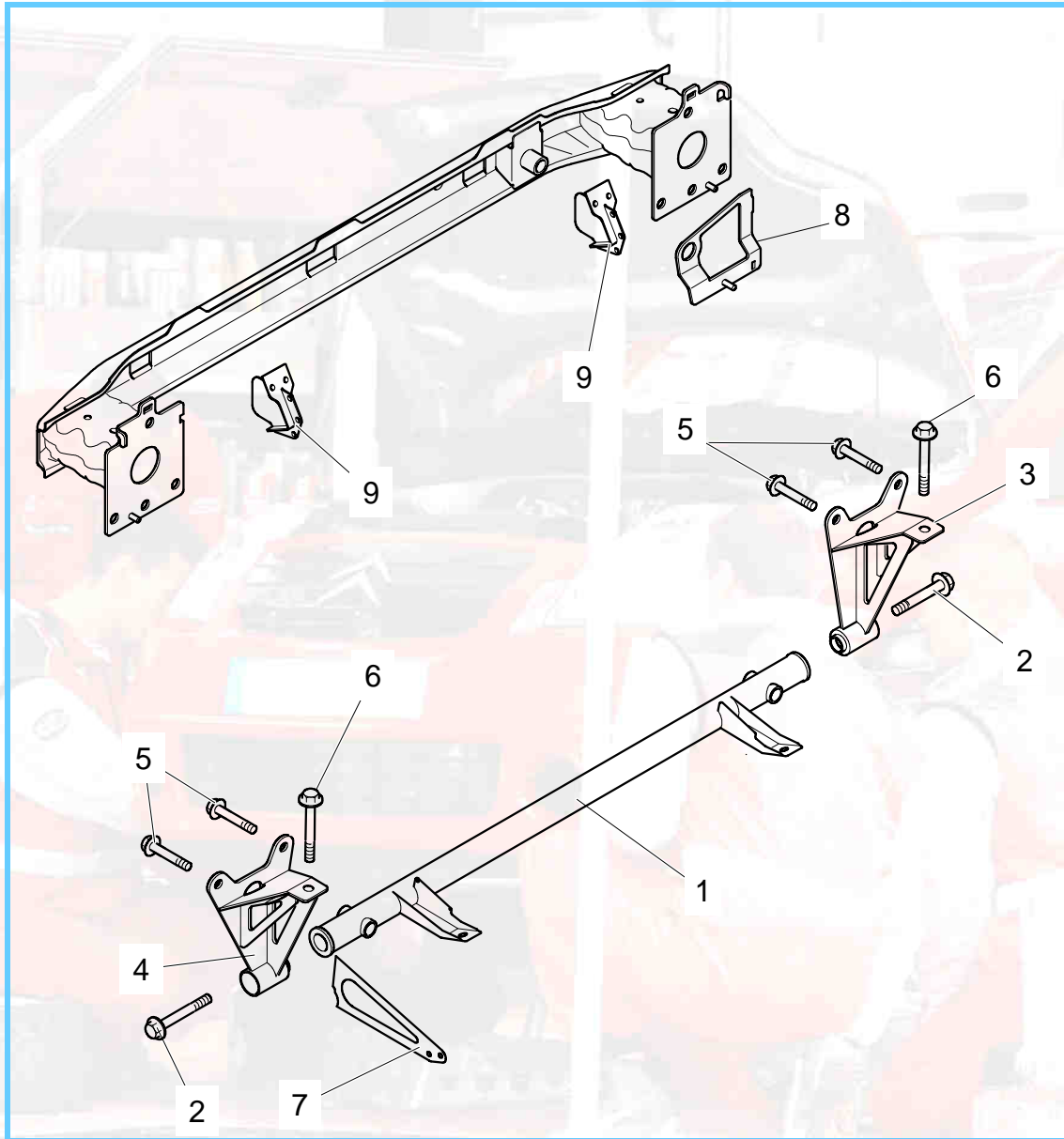
Version 02 – 02 April 2009

# ***K3D FRONT CROSSMEMBER***



# C2R2MAX

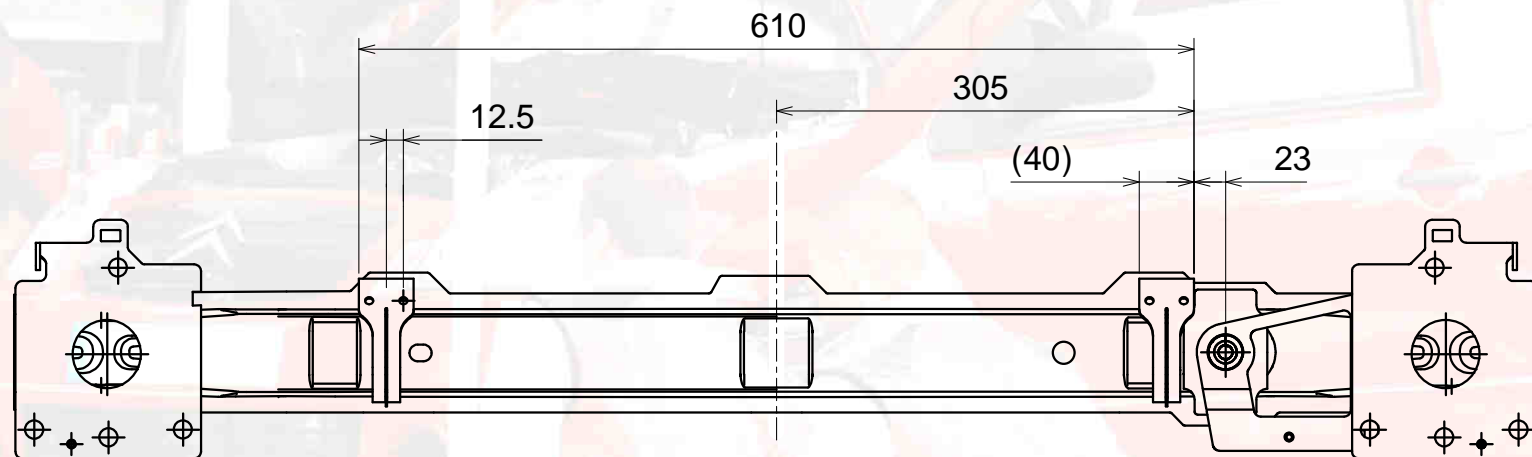
Version 02 – 02 April 2009



Ref	Part Number	Qty	Description
1	3K3D63092D	1	Lower crossmember
2	BCSP514417	2	Fixing screw, lower crossmember H Base M12x175 Lg35 ZN CI10.9
3	2K3D62773A	1	Right bracket, lower crossmember
4	2K3D62774A	1	Left bracket, lower crossmember
5	BCSP6925P2	4	Horizontal bracket fixing screw H Base M8x125 Lg25 ZN CI8.8
6	BCSP5132A7	2	Vertical bracket fixing screw H Washer M10x150 Lg25 ZN CI8.8
7	2K3D63137A	1	Lower support gearbox oil cooler
8	2K3D63125B	1	Support plate, power steering oil cooler
9	2K3D63105B	2	Bracket for fixing radiator on crossmember
10			
11			
12			
13			
14			
15			

### Preparation for the upper crossmember:

Positions and welds for the radiator fixing brackets and the power steering oil cooler support plate (see the diagram and photos below):



**K3D  
FRONT  
CROSSMEMBER**

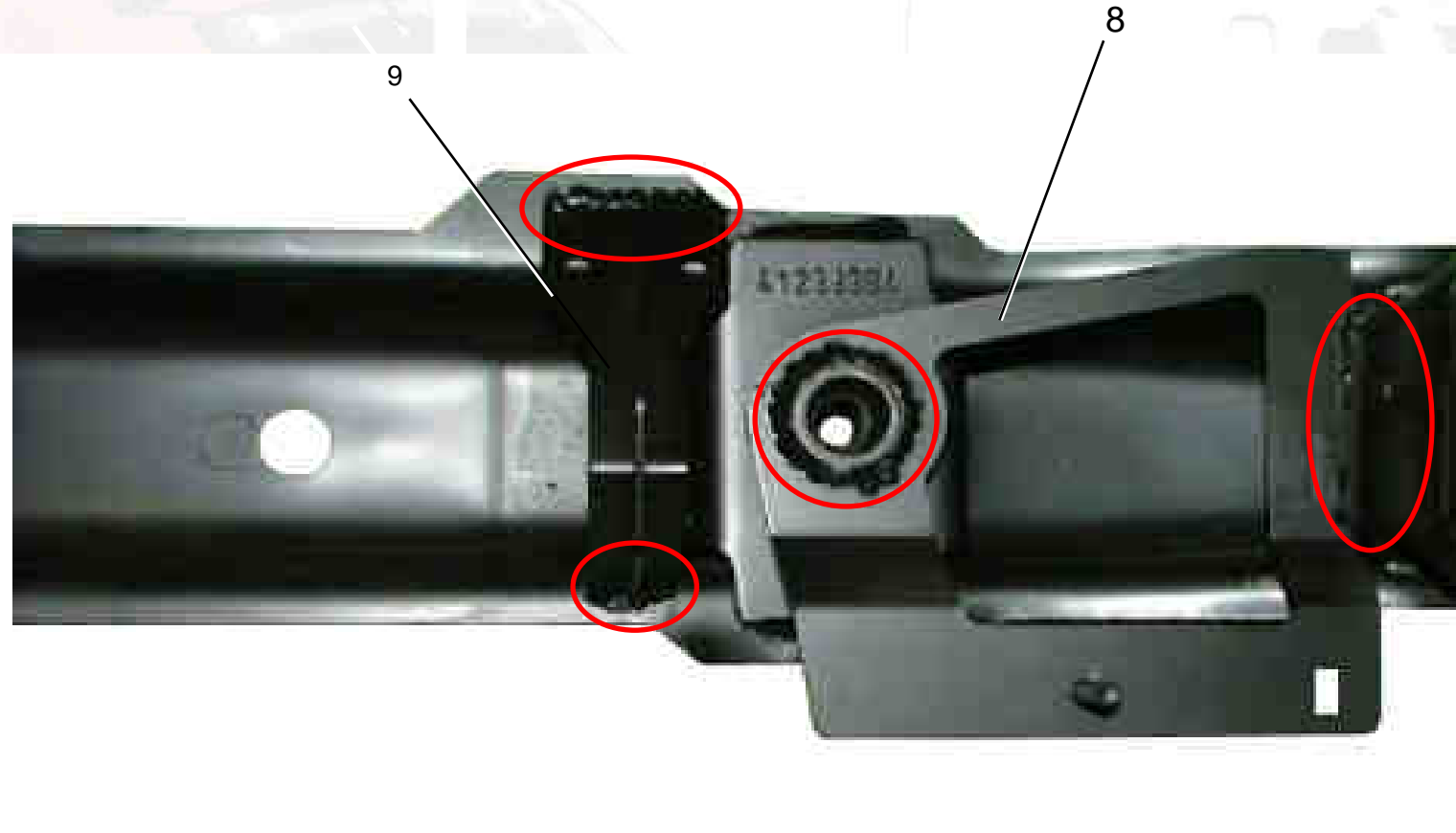


**K  
Body**

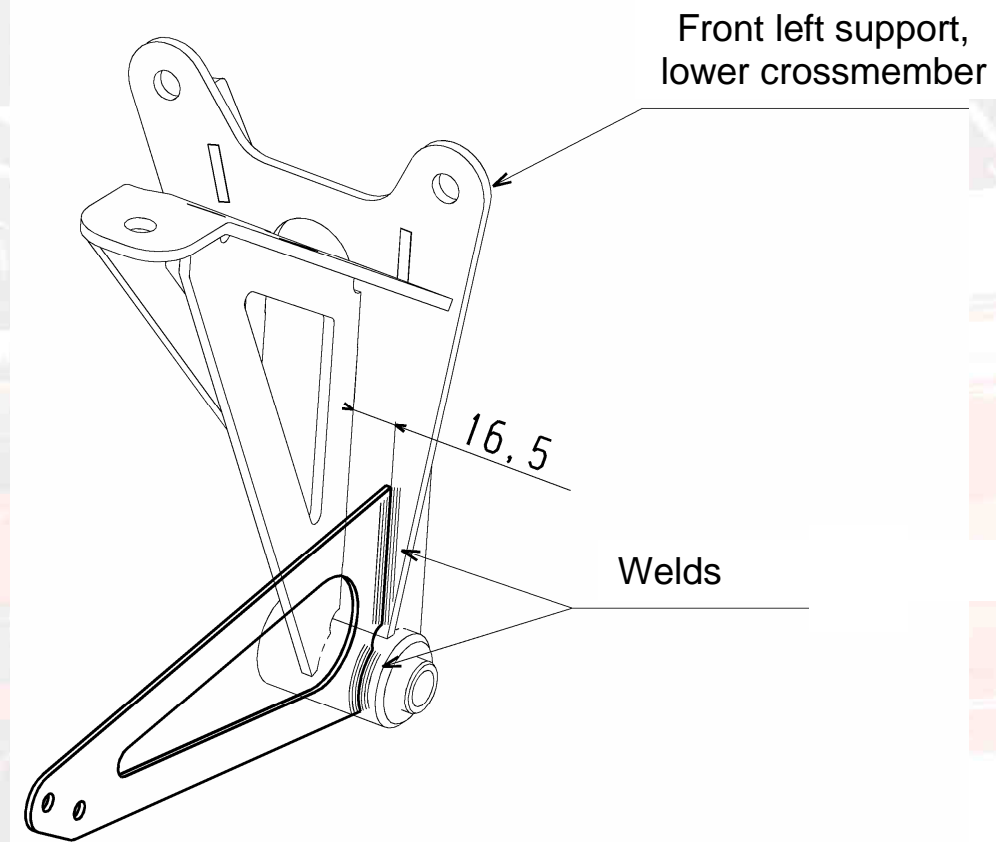
Details of the radiator fixing bracket ([ref. 9](#)), left side:








Details of the radiator fixing bracket ([ref. 9](#)) and power steering oil cooler fixing bracket ([ref. 8](#)), right side:



Welding for the oil cooler lower support ([ref. 7](#)) on the left bracket of the lower crossmember ([ref. 4](#)) :





 	Horizontal bracket fixing screw ( <a href="#">ref. 5</a> )	<b>3 m.kg</b> <b>242</b>
 	Vertical bracket fixing screw ( <a href="#">ref. 6</a> )	<b>3 m.kg</b> <b>242</b>
 	Lower crossmember fixing screw ( <a href="#">ref. 2</a> )	<b>6.5 m.kg</b> <b>270</b>

**K3D  
FRONT  
CROSSMEMBER**



**K  
Body**